
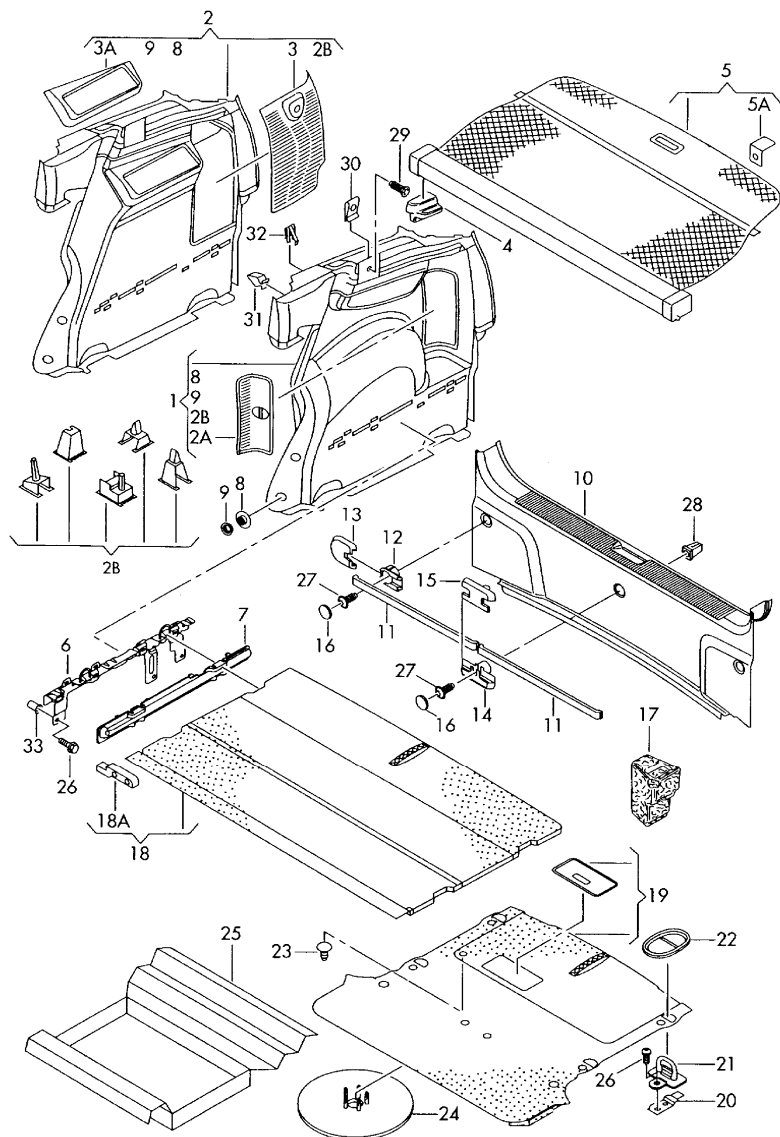


Model	Year	MG	SG	Illustration	Restrictions	UPD	19:42	08.04.2014	 Audi	ETKA
A2	2001	8	63	863-080		1010				



Pos	Part Number	Description	Remark	Qty	Model
		individual parts luggage boot trims trim for rear cross panel luggage comp. floor covering			
	07/01-10/034PK	soul (black)	-YA, YH, YJ, YK, YL, QE, NN, NT, NU		
17	11/03-08/054PK	soul (black)		1	
		support warning triangle see illustration:	860-00		
18	8Z0 858 875	luggage compartment floor for vehicles with higher cargo platform		1	
a	06/00-06/0188B	swing (dark grey)	-YB		
	06/00-06/0189C	twist (beige)	-YC		
(18)	8Z0 858 875 A	luggage compartment floor for vehicles with higher cargo platform		1	
	07/01-10/0344H	soul (black)	-YA, YH, YJ, YK, YL, QE, NN, NT, NU		
a	07/01-10/035K2	light platinum (grey)	-YG		
	07/01-10/0389C	twist (beige)	-YC		
	11/03-08/0544H	soul (black)			
18A	8Z0 858 835	bracket for vehicles with higher cargo platform	left, right	1	
	06/00-08/054PK	soul (black)			
(19)	8Z0 863 463	luggage comp. lining, folding for models with split rear seat and backrest rework if necessary		1	PR-3NC