
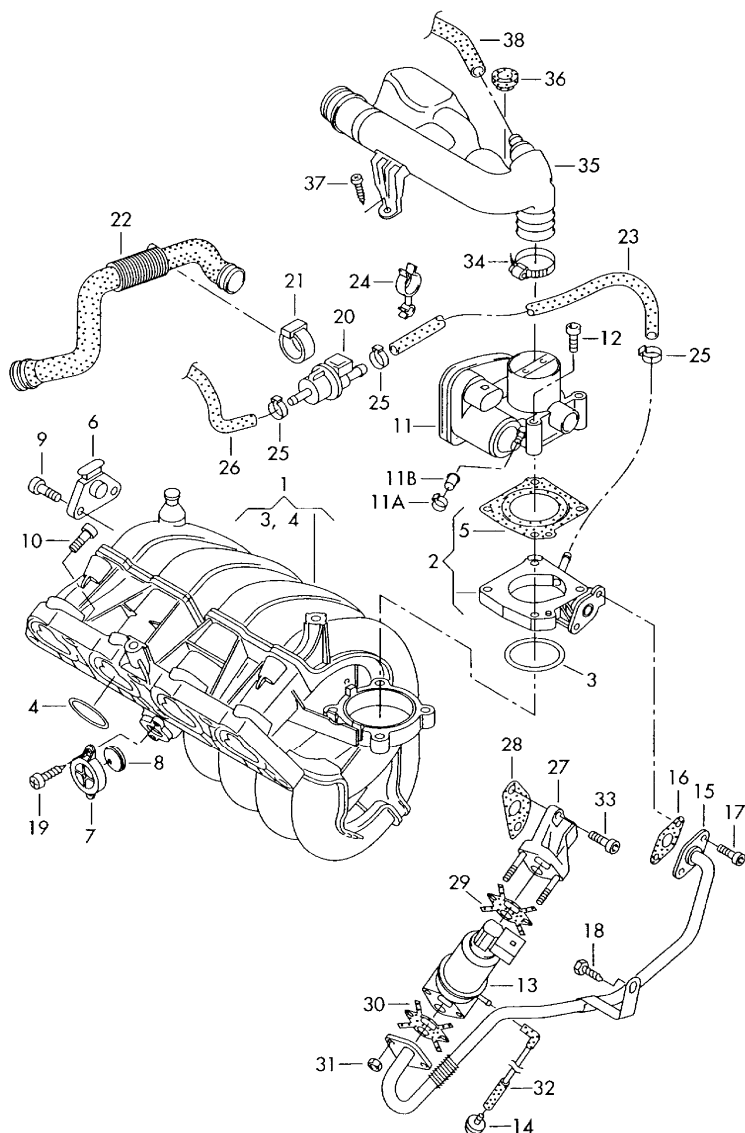



|       |      |    |    |              |  |     |       |            |  |
|-------|------|----|----|--------------|--|-----|-------|------------|--|
| Model | Year | MG | SG | Illustration |  | UPD | 21:26 | 28.12.2013 | <br><b>ETKA</b><br>Audi |
| A2    | 2002 | 1  | 29 | 129-030      |  | 996 |       |            |  |



| Pos  | Part Number    | Description   | Remark       | Qty | Model                   |
|------|----------------|---|--------------|-----|-------------------------|
|      |                | intake system<br>throttle valve control element<br>exhaust gas recirculation    | 1.4ltr.      |     | petrol eng.+<br>AUA,BBY |
| 1    | 036 129 711 BH | intake manifold   |              | 1   | AUA                     |
| (1)  | 036 129 711 DP | intake manifold   |              | 1   | BBY                     |
| 2    | 036 133 255 E  | intermediate flange   |              | 1   |                         |
| 3    | 036 133 073    | seal  | 64X2,3X5,6   | 1   |                         |
| 4    | 036 129 717 E  | seal  | 45X2,3X4,9   | 4   |                         |
| 5    | 036 133 161 C  | seal  |              | 1   |                         |
| 6    | 036 906 051    | pressure sensor   |              | 1   |                         |
| 7    | 036 129 720    | end cap   |              | 1   |                         |
| 8    | 036 129 530    | non-return valve  |              | 1   |                         |
| 9    | N 104 045 01   | socket head bolt with<br>hexagon socket head                                    | M4X16        | 2   |                         |
| 10   | N 906 354 01   | socket head bolt with<br>hexagon socket head                                    | M8X38        | X   |                         |
| 11   | 036 133 062 L  | throttle valve control element<br>for vehicles with accelerator<br>pedal sender |              | 1   |                         |
|      |                | also use:   |              |     |                         |
|      | N 101 969 01   |   | N 101 969 01 | 1   |                         |
|      | 035 133 335    |   | 035 133 335  | 1   |                         |
| 11A  | N 101 969 01   | clamp   | 14,8X7X0,60  | 1   |                         |
| 11B  | 035 133 335    | cap closure   | 8            | 1   |                         |
| 12   | N 100 993 02   | socket head bolt with hexagon<br>socket head (combination)                      | M6X65        | 4   |                         |
| 13   | 036 131 503 M  | exhaust recirculation valve<br>F >> 8Z-1-070 000                                |              | 1   |                         |
| (13) | 036 131 503 T  | exhaust recirculation valve<br>F 8Z-2-000 001>>                                 |              | 1   |                         |
| 14   | 037 133 843 A  | air filter  |              | 1   |                         |
| 15   | 036 131 521 AC | connecting pipe   |              | 1   |                         |
| 16   | 036 131 550 A  | seal  |              | 1   |                         |
| 17   | N 014 745 2    | socket head bolt with<br>hexagon socket head                                    | M6X14        | 2   |                         |
| 18   | N 904 130 06   | hexagon bolt  | 6X19         | 1   |                         |

|       |      |    |    |              |  |     |       |            |   |      |
|-------|------|----|----|--------------|--|-----|-------|------------|---|------|
| Model | Year | MG | SG | Illustration |  | UPD | 21:26 | 28.12.2013 |  | ETKA |
| A2    | 2002 | 1  | 29 | 129-030      |  | 996 |       |            |   |      |

| Pos  | Part Number   | Description                                  | Remark      | Qty | Model | Pos | Part Number | Description | Remark | Qty | Model |
|------|---------------|--|-------------|-----|-------|-----|-------------|-------------|--------|-----|-------|
| 19   | N 904 347 02  | oval head panel screw                        | 4,8X16      | 2   |       |     |             |             |        |     |       |
| 20   | 6Q0 906 517   | valve  |             | 1   |       |     |             |             |        |     |       |
| 21   | 535 133 459   | thrust ring                                  |             | 1   |       |     |             |             |        |     |       |
| 22   |               | see illustration:                            | 129-15      |     |       |     |             |             |        |     |       |
| 23   | 8Z0 133 518 C | connecting hose                              |             | 1   |       |     |             |             |        |     |       |
| 24   | 701 971 848 D | retainer, swivel                             | 14/25       | 1   |       |     |             |             |        |     |       |
| 25   | N 102 334 01  | clip   | 16,2X7X0,6  | 1   |       |     |             |             |        |     |       |
| 26   |               | see illustration:                            | 201-90      |     |       |     |             |             |        |     |       |
| 27   | 036 131 818 A | adapter                                      |             | 1   |       |     |             |             |        |     |       |
| 28   | 036 131 550 H | seal   |             | 1   |       |     |             |             |        |     |       |
| 29   | 036 131 547 F | seal   |             | 1   |       |     |             |             |        |     |       |
| 30   | 036 131 547 F | seal   |             | 1   |       |     |             |             |        |     |       |
| 31   | N 023 003 13  | hexagon collar nut<br>self-locking           | M8          | 2   |       |     |             |             |        |     |       |
| 32   | 036 133 773 B | vacuum hose<br>F >> 8Z-1-070 000             |             | 1   |       |     |             |             |        |     |       |
| (32) | 036 133 773 G | connecting hose<br>F 8Z-2-000 001>>          |             | 1   |       |     |             |             |        |     |       |
| 33   | N 014 726 3   | socket head bolt with<br>hexagon socket head | M8X30       | 2   |       |     |             |             |        |     |       |
| 34   | N 024 504 4   | clamp  | 40-60X9X0,5 | 1   |       |     |             |             |        |     |       |
| 35   | 036 133 354 C | intake air duct                              |             | 1   | AUA   |     |             |             |        |     |       |
| (35) | 036 133 354 D | intake air duct                              |             | 1   | BBY   |     |             |             |        |     |       |
| 36   | 036 129 689 B | stop buffer                                  |             | 1   |       |     |             |             |        |     |       |
| 37   | N 907 397 03  | panel screw                                  | 5X22        | 1   |       |     |             |             |        |     |       |
| 38   |               | see illustration:                            | 103-05      |     |       |     |             |             |        |     |       |