
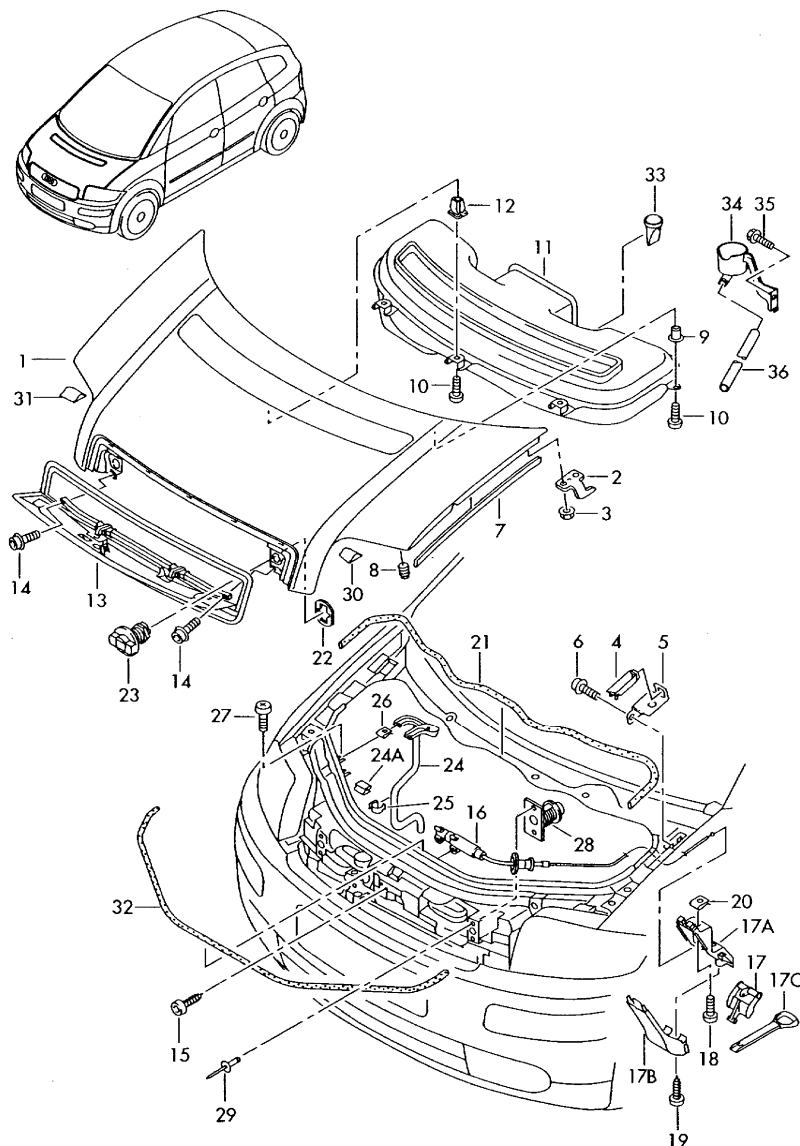


Model	Year	MG	SG	Illustration	Restrictions	UPD	20:19	14.03.2013	 <b>ETKA</b>
A2	2003	8	23	823-10		956			



Pos	Part Number	Description	Remark	Qty	Model
		flap	front		
17A	8Z0 823 587	housing upper part lid lock cable		1	
17B	8Z0 823 588	housing lower part lid lock cable		1	
17C	8Z0 823 537 C	grip for release lever		1	
18	N 904 484 02	fillister hd. bolt	M4X15	2	
19	N 104 159 03	oval hexagon socket head bolt	4X12	1	
20	N 905 591 01	speed nut	M4X16X10	2	
21	8Z0 823 737 B	seal water box		1	
22	8Z0 823 599	shim locking mechanism	left,right	2	
23	8Z0 823 431	locking mechanism	left,right	2	
24	8Z0 819 976 C	water drainage hose	right	1	
24A	N 902 516 02	clip	12,8X10X0,8	2	
25	N 909 263 01	cable holder	22X33,5X0,6	3	
26	N 905 591 01	speed nut	M4X16X10	2	
27	N 902 412 03	fillister hd. bolt	M4X20	2	
28	8Z0 823 436	adapter locking mechanism	left,right	2	
29	N 906 349 01	pop rivet	4X14	4	
30	8Z0 823 729	filler piece	left	1	
31	8Z0 823 730	filler piece	right	1	
32	8Z0 823 733 B	seal	front	1	
33	8Z0 815 941 C	water drain valve		2	
34	8Z0 819 975 G	drain tube	left	1	
(34)	8Z0 819 975 H	drain tube	left	1	PR-T4A
35	N 090 261 9	hexagon head bolt (combi)	M6X20	1	
36	8Z0 819 307 B	water drainage hose	1hd	1	