

Service interval reset on A2

VCDS – professional process

<http://www.ross-tech.com/vcds/tour/sri-reset.html>

VCDS: SRI Reset Image Copyright (C) Ross-Tech, LLC

Operation
Please select an operation

Channel	Description	Unit	Current val.	New val.
02	Service Reminder Status		0	---
40	Mileage since Service	miles x100	11	---
41	Time since Service	Days	257	---
42	Min Mileage to Service	miles x100	100	---
43	Max Mileage to Service	miles x100	100	---
44	Max Time to Service	Days	365	---
45	Oil Quality		1	---
47	Soot Quantity	km x100	0	---
48	Thermal Load	km x100	76	---
49	Min Time to Service	Days	365	---

Save to logfile Perform SRI Done, Go Back

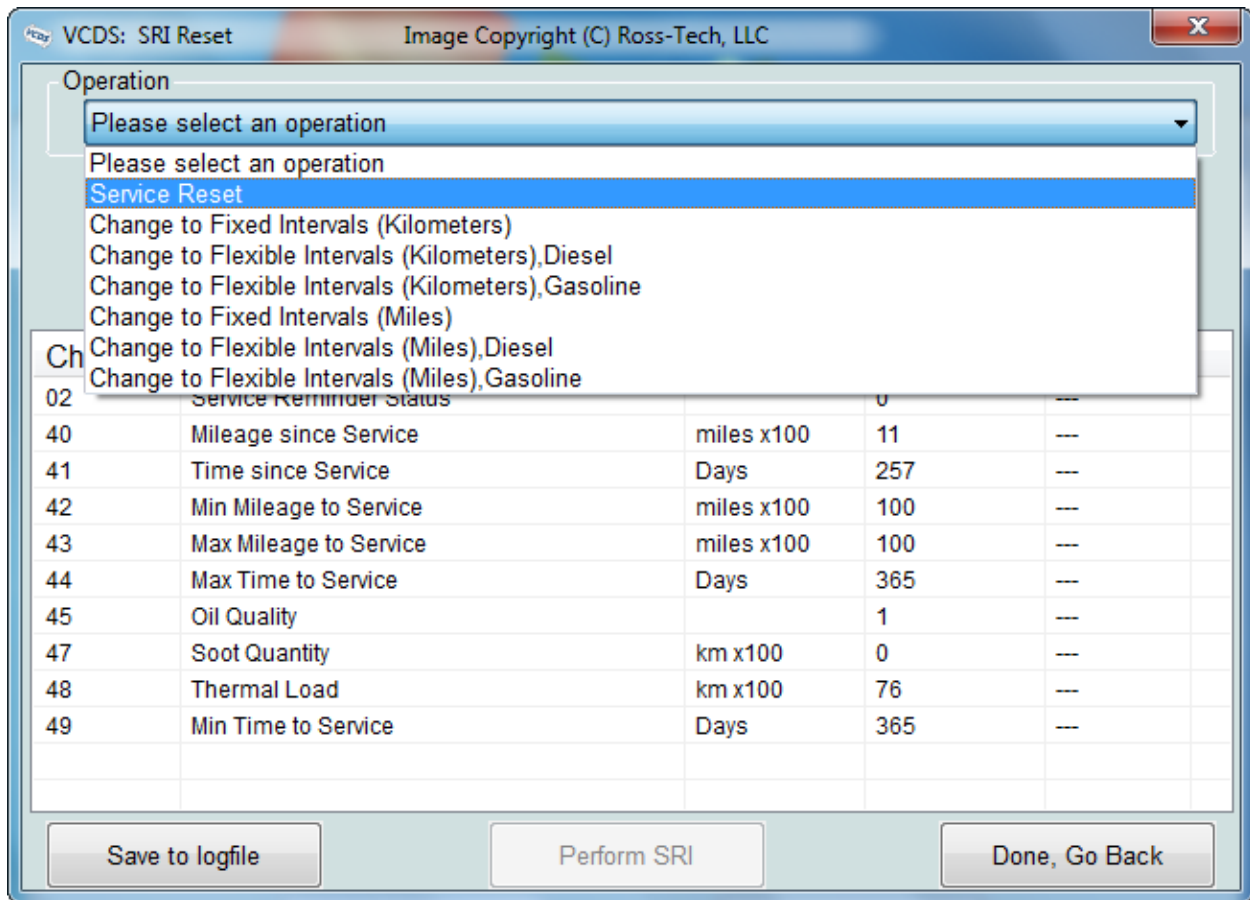
VCDS: SRI Reset Image Copyright (C) Ross-Tech, LLC

Operation
Please select an operation

Channel	Description	Unit	Current val.	New val.
02	Service Reminder Status		0	---
40	Mileage since Service	miles x100	11	---
41	Time since Service	Days	257	---
42	Min Mileage to Service	miles x100	100	---
43	Max Mileage to Service	miles x100	100	---
44	Max Time to Service	Days	365	---
45	Oil Quality		1	---
47	Soot Quantity	km x100	0	---
48	Thermal Load	km x100	76	---
49	Min Time to Service	Days	365	---

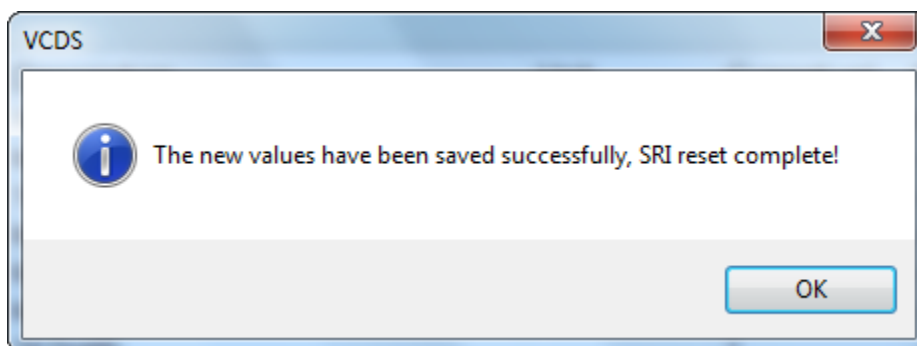
Save to logfile Perform SRI Done, Go Back

The **[SRI Reset]** function is used to reset the Service Reminder in vehicles so equipped. The function will automatically access the Instrument Cluster and will retrieve SRI instructions from the Label File as well as current values stored in the Cluster. New values can be entered by hand, or the user can select the drop-down list to choose from a number of functions which will load standard value sets.



The **[Save to logfile]** button can be useful when there are questions about or difficulties with the SRI function as it's an easy way to send us a snapshot of what's going on. Data is saved to the Session Log.

Upon clicking **[Perform SRI]** the new values will be stored in the (often less than intuitive) sequence required. After cycling the ignition, the cluster should no longer indicate that service is due.



Note: The Service Reminder Function requires supporting data in Label files. VCDS ships with a fairly comprehensive set, but we doubt we've managed to cover every possible car. If you encounter a car that has Service Reminders (not all cars have this) for which the SRI Reset function is not accessible, please send us a [map](#) of the Adaptation channels from the Instrument Cluster in that car.

Models using flexible service intervals may show "---" as values for the time/distance to the next service in the instrument cluster. This is not an error. The system requires a certain time/distance to calibrate itself to show meaningful values, usually this takes about 300 miles or 500 km.

In many newer Audi models (2008 onward), the default "Simple Service Reset" or "Basic Service Reset" choice cannot be used. Instead, you must pick the appropriate choice for your region, for example "#2 Mileage based Service Reset (USA)".

On the latest cars using UDS/ODX diagnostic protocols for the Instrument Cluster, the SRI Reset function does not apply. Instead, SRI must be reset by saving Adaptation values directly in the Instrument Cluster. [This page](#) explains how to do this procedure in a Mk6 Golf. Please contact Ross-Tech via email if you need assistance with this function.

Use **[Done, Go Back]** to return to the Applications screen.

Video

https://www.youtube.com/watch?feature=player_embedded&v=csfhNEAKrOQ

VCDS-Lite

The Video and instruction above show what the VCDS "press one button option" does to the adaptation channels. VCDS - lite does not have the one button option, but you can manually work thru the channels and perform the settings .

2005 A2 1.5TDI 75hp

- After Variable oil service in Audi Newcastle 3 days ago, service light was still on,
- refused to reset it as claimed no evidence of major service, thus considered it due
- evidence below shows they had not set the parameters for new oil
- why is there a belief it's good to take a car to Audi for service?

Instrument control module service settings:

VCDS-Lite: Measuring Blocks / Basic Settings

Sample Rate: 0.6 -

Label File: 8Z0-920-xxx-17.LBL

VCDS-Lite
Measuring Blocks

Group	Adaptation Channels	Value 1	Value 2	Value 3	Value 4
012	Adaptation Channels 040 & 041	40 Adaptation Channel	108 Mileage since Service	41 Adaptation Channel	738 Time since Service
013	Adaptation Channels 042 & 043	42 Adaptation Channel	15 Minimum Mileage to Service	43 Adaptation Channel	31 Maximum Mileage to Service
014	Adaptation Channels 044	44 Adaptation Channel	730 Maximum Time to Service		
015	Adaptation Channel 045 & 046	45 Adaptation Channel	4 Oil Quality		
016	Adaptation Channels 047 & 048	47 Adaptation Channel	85 Soot Entry	48 Adaptation Channel	83 Thermal Load

Next Go into “adaptation” and work thru channels 40 to 48 – logging in is not required

- “pop ups” confirms the channel sequence to use
- “pop ups” confirm info and options to use in each channel
- use the TEST function to observe the result in the channel to ensure result is OK
- If Ok, use the save button to store the new value

After reset

The screenshot shows the VCDS-Lite software interface with the title bar 'VCDS-Lite: Measuring Blocks / Basic Settings'. The main window has a light blue background and contains the following information:

Sample Rate: 0.6 /

Label File: 8Z0-920-xxx-17.LBL

VCDS-Lite Measuring Blocks

Group 012: Adaptation Channels 040 & 041

Adaptation Channel	Mileage since Service	Adaptation Channel	Time since Service
40	1	41	3

Group 013: Adaptation Channels 042 & 043

Adaptation Channel	Minimum Mileage to Service	Adaptation Channel	Maximum Mileage to Service
42	15	43	31

Group 014: Adaptation Channels 044

Adaptation Channel	Maximum Time to Service
44	730

Group 015: Adaptation Channel 045 & 046

Adaptation Channel	Oil Quality	Adaptation Channel	Total Consumption
45	4		

Group 016: Adaptation Channels 047 & 048

Adaptation Channel	Soot Entry	Adaptation Channel	Thermal Load
47	0	48	0

- Switch Ignition on and off
- Service indicator cleared
- Mileage till next service 30200

(yes, this is one of the few models with an Audi 30K variable interval. It's a completely different discussion on the wrongs and rights of this!)